



## ■■■ Deko-2000 washer-disinfector

**FRANKE**

■ Technology

■ Quality

■ Design

**■■■ Deko-2000 is a microprocessor controlled large capacity cabinet washer-thermal disinfecter for professional use in all medical, pharmaceutical and veterinary establishments, built to withstand continual everyday use.**

Deko-2000 is available as a single door or pass-through model, with or without a dryer.

The structures are made of stainless AISI 304 and acid-resistant AISI 316 steel, and its components selected on the basis of stringent tests. In addition to durability, efficiency and dependability, special attention is also paid to the many-sided and trouble-free performance of the machine.



**■■■ Control**

A microprocessor provides the selection of 5 different programmes. Wash water temperature can be adjusted to enable the cleaning of surgical instruments, rubber and plastic goods, as well as glassware. The disinfection temperature and time are being programmed in accordance with the existing standards and can be regulated by using special codes.

In cases of malfunction, a red indicator comes on and, if the set values for disinfection time & temperature have not been reached, the doors do not open. A security lock also prevents them from opening while the machine is running.

A chart recorder or printer and a cycle counter are optional.

**■■■ Construction**

Deko-2000 has rotating wash arms and an automatic connection for spray racks injecting water inside cannulated instruments, hoses and bottle type glassware. Design of the demountable wash arms secures a complete contact with all parts of the load and the wash chamber and allows easy cleaning of the spray holes. Dosage of liquid detergent is carried out automatically by means of a pump and can easily be regulated for agents with varying concentration. Extra detergent pump, wetting agent pump and distilled water feed are available as options. The shelves are mounted on slides and are fully removable.

**■■■ Programmes**

The machine comes with three different washing programmes as standard. As needed, two other programmes can be utilized. Their content can be tailored to the customer's wishes.

Depending on the number of selected phases, the programmes normally last from 10 to 60 minutes. In models with an integrated drying unit drying time and temperature are regulated independently.

**■■■ Features**

- 5 variable programmes
- door window(s)
- rotating wash arms, 3 as standard + 2 optional
- sliding wash shelves, 2 as standard + 2 optional
- automatic connection valve for spray racks
- wash water temperature adjustment
- digital thermometer
- automatic detergent dosage
- programme phase indicators
- door safety interlock
- hot and cold water connections
- outlet valve and water trap
- over-temperature cutout
- overflow protection
- fault indicator and code system
- sound and heat insulation
- thermocouple entry port

## ■■■ Models

Single-door :	DEKO-2000 D (L) DEKO-2000 E (L)	D = steam heated E = electrically heated
Pass-through :	DEKO-2000 DX (L) DEKO-2000 EX (L)	X = pass-through model L = laboratory model
Integrated dryer:	eg. DEKO-2000 EXL	K = including a dryer = electrically heated, pass-through laboratory model



## ■■■ Construction and equipment

The Deko-2000 is easy to install and service. The machine's connections and those of its parts which require adjustment are situated towards the bottom of the machine. The hot and cold water connections come equipped with check valves, back valves, mud filters and siphonage protection. The flexible connection hoses are standard equipment, as the Ø 50 mm outlet hose. The electrical cable is 2 m long, the connection semifixed. In laboratory models, the distilled water feed is accomplished by either a solenoid valve or a separate pump. In the steam heated model the condensate connection is also flexible.

- chart recorder
- cycle counter
- filter monitoring
- temperature control
- time regulation



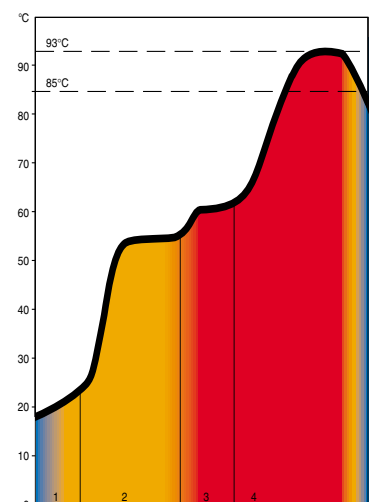
## ■■■ Operation panel

- main switch
- function indicators
- programme selection and start buttons.
- +/- washing water temp. adjustment buttons.
- digital thermometer, programme & phase display, service code indication.



## ■■■ Program example

- cold water rinse
- circulation wash with detergent
- warm water rinse
- disinfection >85 °C / 1, 2, 5, 10 minutes.
- ...93 °C / 10 minutes.



## ■■■ Instruments

**Though developed for the cleansing of medical instruments and anaesthesia equipment, DEKO baskets and racks also serve as storage and carrying baskets.**

### 1.

381100 Sterilization basket  
585 x 395 x 195

310101 Divider

### 2.

381110 Sterilization basket  
585 x 395 x 100

### 3.

381103 Sterilization lid

### 4.

381170 Utensil basket (includes lid)  
340 x 250 x 200

### 5.

381200 Instrument basket 450 x 340 x 70

381210 Instrument basket 340 x 250 x 70

381220 Instrument basket 250 x 170 x 70

381201 Lid 450 x 340

381211 Lid 340 x 250

381221 Lid 250 x 170

### 6.

381202 Narrow-mesh internal basket  
430 x 320 x 50

381212 Narrow-mesh internal basket  
320 x 230 x 50

381222 Narrow-mesh internal basket  
230 x 150 x 50

381203 Lid 430 x 320

381213 Lid 320 x 230

381223 Lid 230 x 150

### 7.

381300 DEKO half-basket  
440 x 290 x 180

381301 Divider

### 8.

381310 Rack for anaesthesia equipment

### 9.

381340 Washing rack  
for sigmoidoscopes



①



②



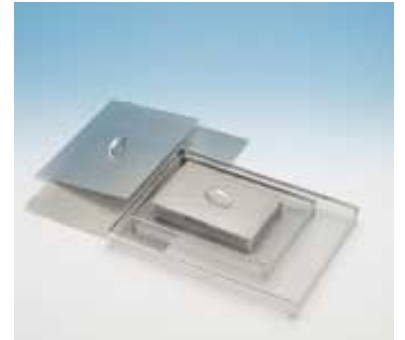
③



④



⑤



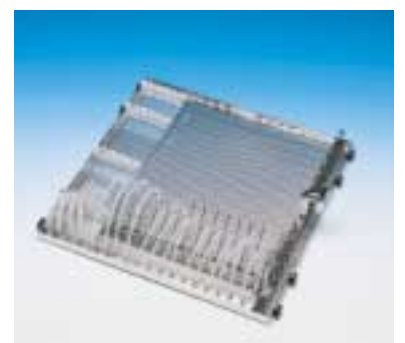
⑥



⑦



⑧



⑨





⑩

**10.**  
381314 Rack for anaesthesia equipment  
for machines incl. a dryer

**11.**  
381350 Washing rack for Bird hoses

**12.**  
381360 Washing rack for suction hoses

**13.**  
381343 Rack for rigid scopes

**14.**  
381460 Shoe rack

**15.**  
381685 Kidney bowl rack



⑬



⑪



⑭



⑫



⑮

## ■■■ Shelves

**The same washer is used for both hospital instruments and laboratory glassware. By switching washing shelves the user can apply the DEKO washer to many different purposes.**



⑯

**16.**  
374073 Middle shelf for hospital  
instruments  
(includes washer arm)

**17.**  
374078 Middle shelf for laboratory use  
(includes washer arm)



⑰

## ■ ■ ■ Laboratory

**The versatile equipment makes the cleansing of laboratory glassware easy and efficient.**



①

**1.**

- 381500 Sector basket, h = 135
- 381501 Lid
- 381510 Sector basket, h = 210
- 381502 Divider, h = 50
- 381503 Divider, h = 90
- 381504 Divider, h = 125
- 381505 Divider, h = 180



⑦



②

**2.**

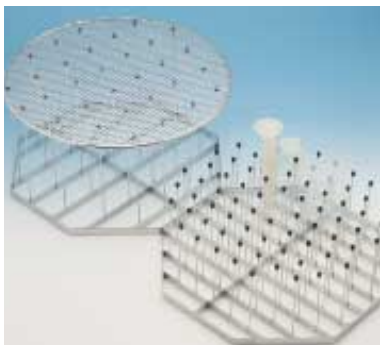
- 381515 Pegged rack

**3.**

- 381520 Pegged rack, h = 150
- 381530 Pegged rack, h = 250
- 381535 Pressure lid



⑧



③

**4.**

- 381540 Microscope-slide rack

**5.**

- 381550 Petri dish rack

**6.**

- 381555 Washing rack for graduated flasks

**7.**

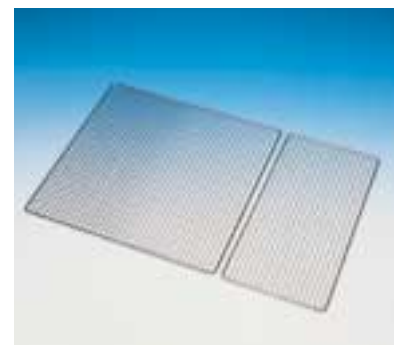
- 381580 Washing rack for beakers

**8.**

- 381590 Washing carriage for pipettes

**9.**

- 381531 1/1 lid
- 381532 1/2 lid
- for rack 381555



⑨



④

**10.**

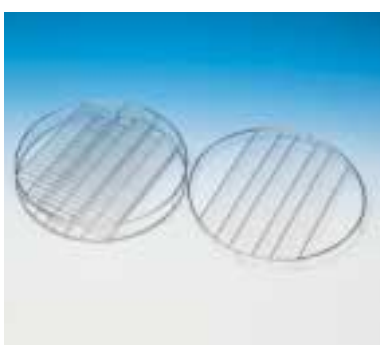
- N23658 Support star for bottles, Ø 8 mm tube
- N23659 Support star for bottles, Ø 6 mm tube
- N24366 Height adjustment spring, Ø 8 mm tube
- N24435 Height adjustment spring, Ø 6 mm tube
- 381557 Bottle holder, Ø 6 or 8 mm tube

**11.**

- 381725 Tension key for spray tubes



⑩



⑤



⑥



⑪

## ■■■ Dental equipment



①



②



③

## ■■■ Bottles



①



②

The baskets and racks developed for various dental equipment cleansing needs are well suited to the various DEKO washer models. Washing racks are also manufactured according to the customer's wishes.

**1.**

381215 Instrument basket on end plates  
340 x 250 x 70

381216 Rack for instrument basket

381211 Lid for 381215

**2.**

381217 Compartment for mirrors and instruments

**3.**

381385 Washing rack for saliva- and suction-tubes

**4.**

381162 Dental tray rack

**5.**

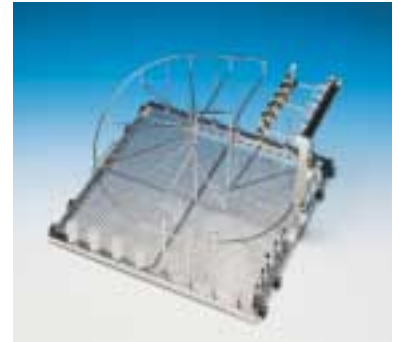
381397 Hose rack

**6.**

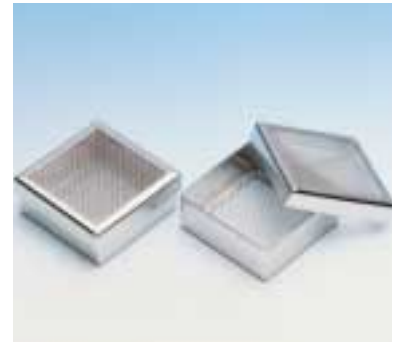
381230 Fine mesh box for needles and bore bits  
90 x 90 x 40 mm



④



⑤



⑥

For bottle washing, rack compartments and spray racks for various bottle sizes are supplied to laboratories and dairy kitchens.

**1.**

381700 Bottle washing rack 150 g

381710 Bottle washing rack 250 g

381720 Bottle washing rack 500 g

**2.**

381701 Bottle compartment 150 g

381702 Lid 150 g

381711 Bottle compartment 250 g

381712 Lid 250 g

381721 Bottle compartment 500 g

381722 Lid 500 g

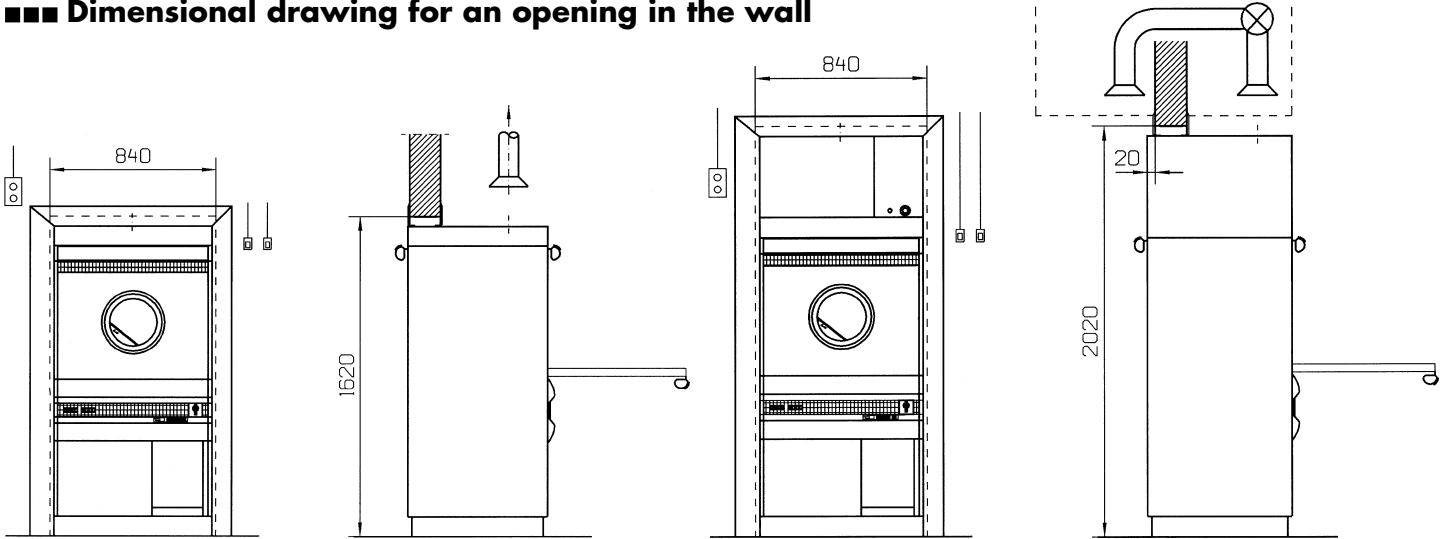
**3.**

381603 Bottle washing rack,  
custom made

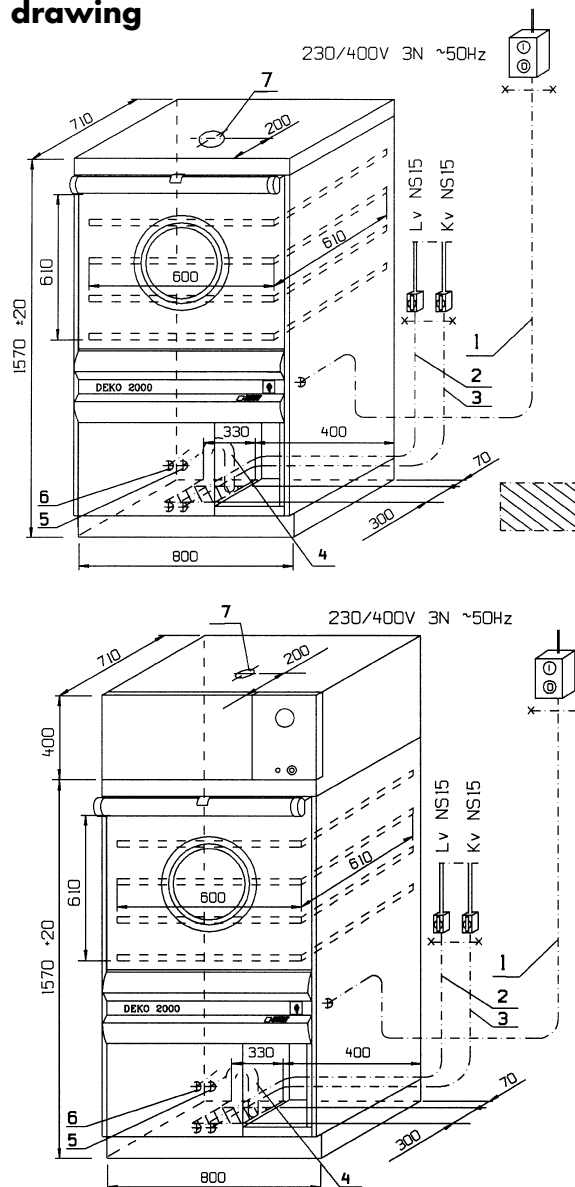


③

## ■ ■ ■ Dimensional drawing for an opening in the wall



## ■ ■ ■ Dimensional drawing



## ■ ■ ■ Connections

1. Electricity  
230/400V 3N 50 Hz 12,8 or 10,6 kW  
Fuses 3 x 25 A or 3 x 16 A  
Other voltages at request.
  2. Cold water, R 1/2", L=3 m
  3. Warm water, R 1/2", L=3 m
  4. Outlet dia 50 mm
  5. Steam\*, R 1/2", L = 1,2 m
  6. Condensate\*, R 1/2", L = 1,2 m
  7. Ventilation, dia 90 mm
- \* only in steam heated D -models.

Heating power 10 or 7,5 kW  
 Dryer 2.9 kW (option)  
 Circulation pump 2,8 kW, 800 L/min  
 Min/max water pressure 1/8 bar.  
 Water flow 0,5 L/sec  
 Heat transmission appr. 900 W  
 Steam pressure 2-3 bar (in D-models)  
 Net weight 160 kgs.

CE-marked.

Subject to changes without further notice.

Manufacturer:  
 Franke Finland Oy  
 76850 Naarajärvi  
 Finland  
 Tel. +358 15 7611444  
 Fax +358 15 7611560

Representative:  
 Dekomed Ltd  
 34 London Road, Hazel Grove  
 Stockport, Cheshire SK7 4AH, UK  
 Tel. 0161 483 7333  
 Fax 0161 483 7366

**FRANKE**